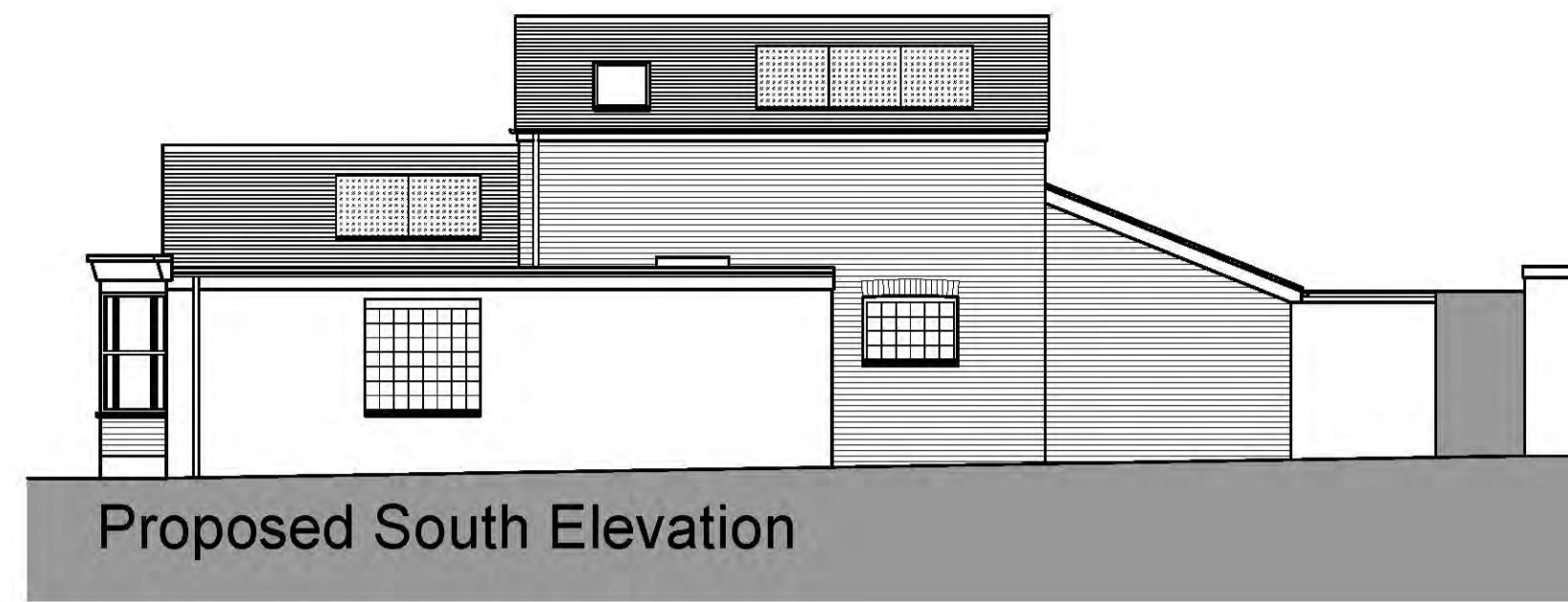
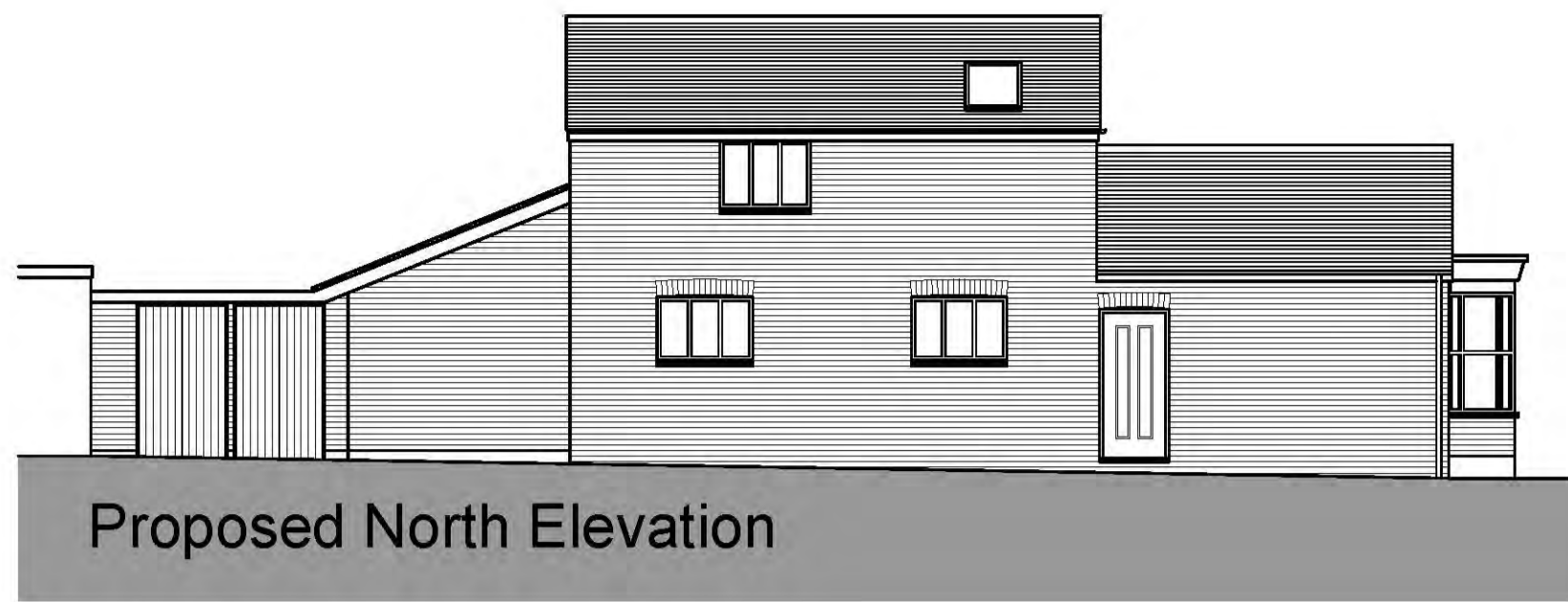


Notes:  
 This Drawing is to be read in conjunction with specialists drawings and details.  
 All dimensions, positions and lines of wires and conduits, soil conditions etc  
 are assumed and are to be investigated prior to the commencement of works.



Proposed North Elevation

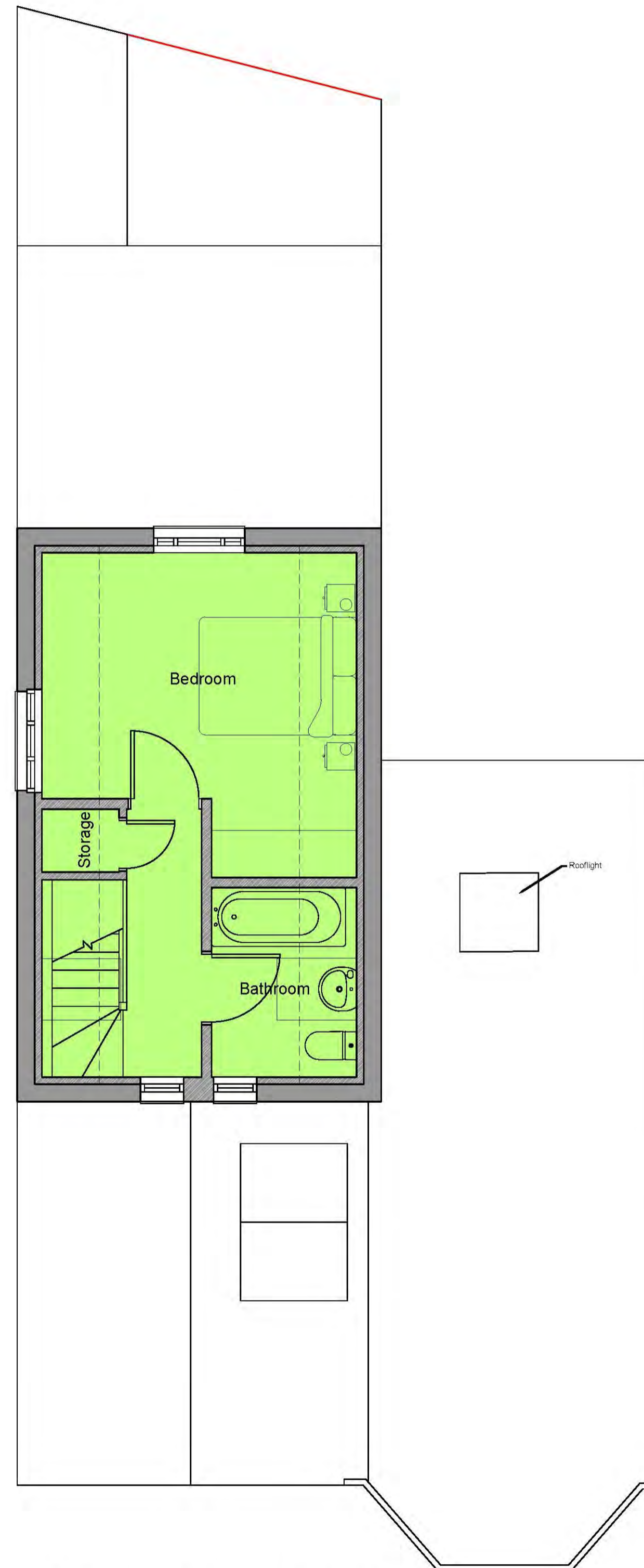
Proposed West Elevation

Proposed South Elevation

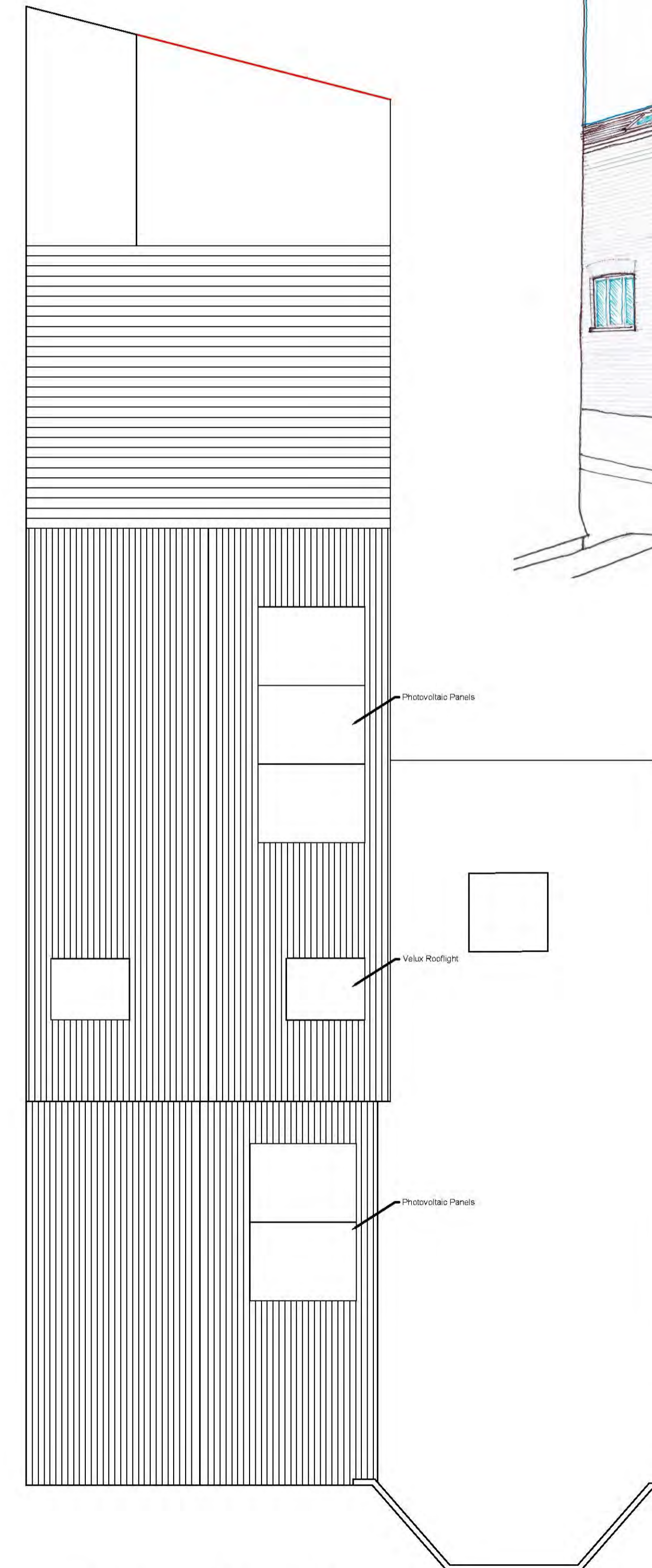
Proposed East Elevation



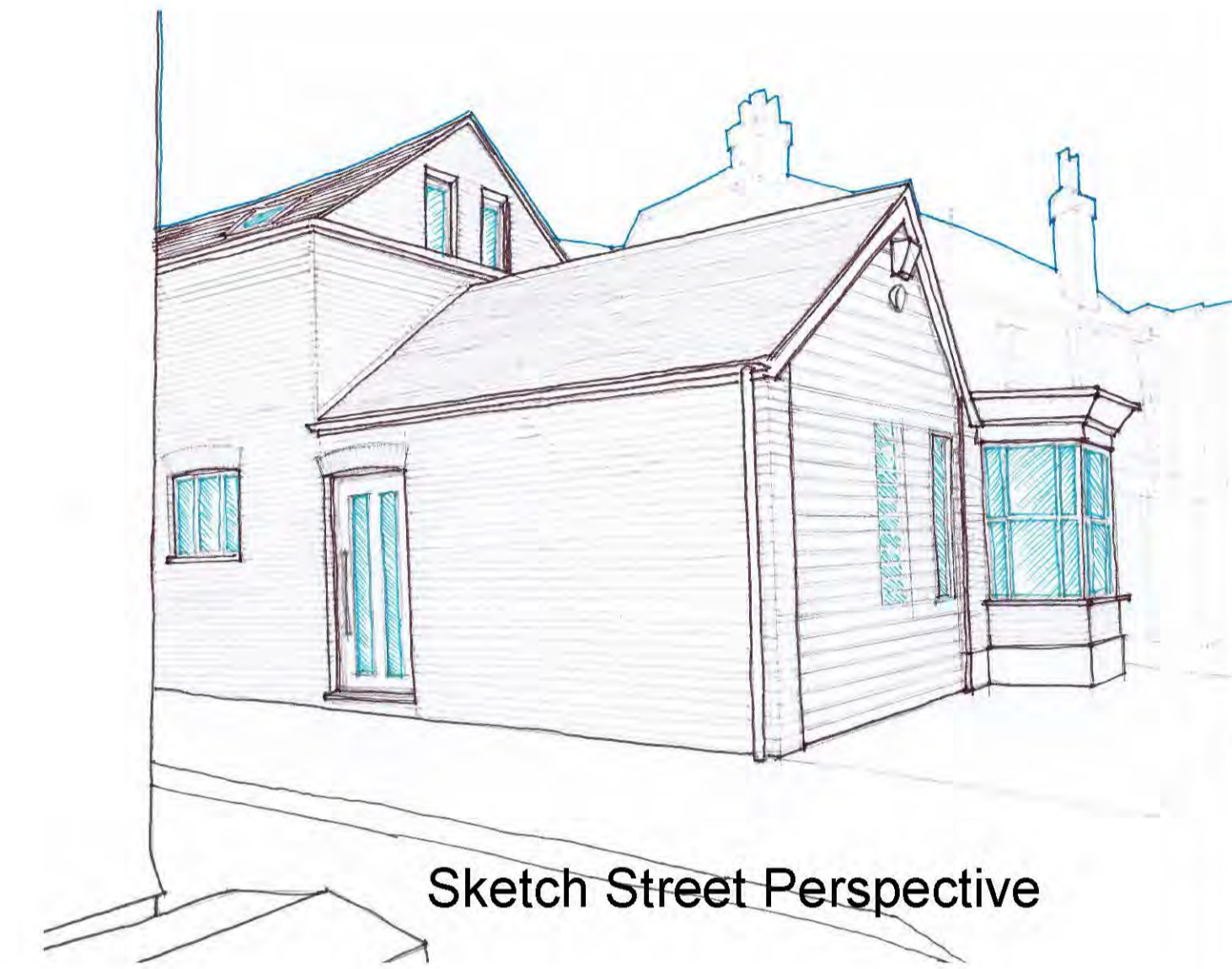
Accommodation Schedule		
Description	1 bed 2 person duplex flat	1 bed 2 person flat
Gross Internal Floor Area	56.48m <sup>2</sup>	50.09m <sup>2</sup>
Living/Kitchen	22.76m <sup>2</sup>	26.95m <sup>2</sup>
Bedroom	14.38m <sup>2</sup>	13.65m <sup>2</sup>
Bathroom	4.44m <sup>2</sup>	3.74m <sup>2</sup>
Storage	1.50m <sup>2</sup>	1.02m <sup>2</sup>
Amenity	7.67m <sup>2</sup>	Nil
Parking	Nil	Nil
Cycles	x 2	x 2
Bin Store	Shared	Shared



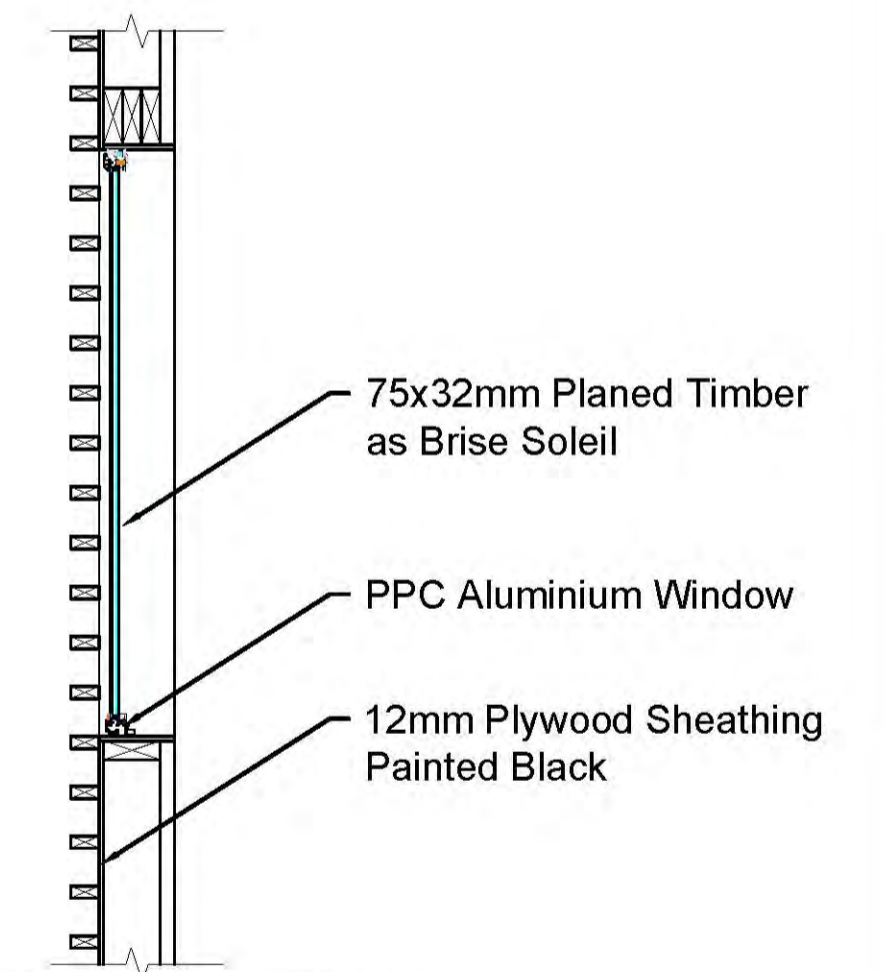
Proposed First Floor Plan



Proposed Roof Plan



Sketch Street Perspective



Section - New Timber Wall Infill

Proposed Ground Floor Plan



Rev.	Description	Date
 <b>REGIS GROUP PLC</b> RG Airspace Developments Ltd <small>16-18, Warton Square, Southam-on-Sea, Essex, SS11 2WS          t: 01702 203202 e: r.marmatt@regisplc.com</small>		
Project: Storage building to rear of: 555 London Road Westcliff-on-Sea		
Drawing Title: Proposed conversion - 2 x 1 bed flats. Plans, elevations, sketch and detail.		
Date: 13.11.2018	Plot Date: 15.11.2018	
Scale: 1/20, 1/50, 1/100	CAD File: 555 London Road	
Drawing Number: 18-555LR-02	Rev.:	C